

[www.admiral-wholesale.com](http://www.admiral-wholesale.com)

[sales@admiral-wholesale.com](mailto:sales@admiral-wholesale.com)

# ADMIRAL

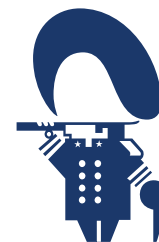
WHOLESALE SIGN COMPONENTS

**(888) 251-9865**

**2022**

# ADMIRAL

## WHOLESALE SIGN COMPONENTS



**COMPANY POLICIES** 3

**ALUMINUM LENGTHS** 4-10

Piano Hinge, Z-clips ..... 5  
 Dividers & Retainers ..... 6  
 Retainers, Angles & Flat Bars ..... 7-9  
 Frames ..... 10  
 Socket Raceway Covers & Lamp Divider ..... 11

**FRAMES** 7-14

Slide Style Frames & Kit Materials ..... 7  
 Hinge Style Frames ..... 8, 11

**SIGN FACES** 13-15

Faces ..... 14

**SIGN SYSTEMS** 16-19

Secure Systems ..... 17  
 Under Canopy Signs ..... 17  
 ClipsIn ..... 18 - 19







# **COMPANY POLICY**

## **Prices**

Prices are subject to change without notice. Phone quotes must be confirmed in writing either by mail, email, or fax. Written quotes are valid for 5 days, verbal quotes are not guaranteed. All prices are subject to net additions of Federal, State, or Municipal taxes or charges.

## **Welded / Welded & Wired Frames**

For all welded / welded and wired frames, the customer assumes responsibility for the sign engineering, design, and installation. Admiral is only responsible for the construction of the sign. The customer must sign a liability waiver releasing Admiral from any liability due to faulty engineering, design or installation prior to the beginning of production.

## **Shipping**

Freight prices are on a per shipment basis and are not included in standard pricing. Freight is F.O.B. Cape Girardeau, MO. We have a daily shipping schedule with several common carriers, which we have negotiated for best pricing. All shipments are prepaid by Admiral, and added to the invoice, unless otherwise indicated at the time of order by the customer. All materials are shipped in packaging that meets, or exceeds, industry standards for common carrier shipment.

## **Cancellations**

Written notification of any cancellations, or order modifications, should be reported to the acting sales representative immediately. If an order is canceled or modified, the customer accepts liability for all charges incurred in production up to that time. Payment of cancellation charges will be the responsibility of the customer. Charges will not exceed the purchase price of the canceled portion of the contract.

## **Warranty**

Admiral warrants that products sold to any customer shall be free from defects in material and workmanship and shall conform to specifications provided by the customer. Claims for defective products must be made in writing upon receipt and prior to installation of purchased product. Prior written approval from Admiral is required before any material is refused and / or returned for credit. Any defective ballast under warranty must be returned to Admiral for exchange, or an exchange can be made with your distributor. This warranty does not include damages resulting from acts of God, accidents, misuse, or negligence. Except for this warranty, Admiral offers no other warranty of our products to our customers.

## **Freight Claims**

It is the responsibility of the party receiving the shipment to inspect all material for damages, shortages, or loss upon receipt and to notify Admiral of any and all claims within 24 hours of receiving material and prior to installation. Save all items and packaging received; without these items, we cannot assist you in filing claims. All shipments sent freight collect are the sole responsibility of the buyer.

## **Returns**

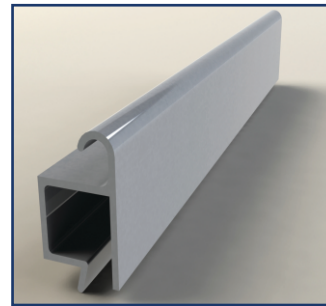
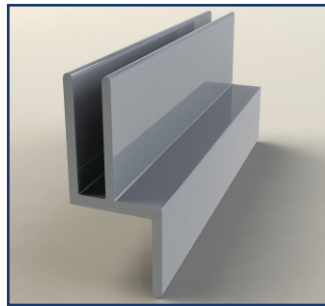
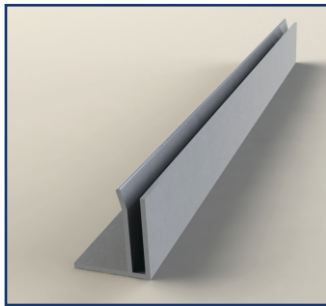
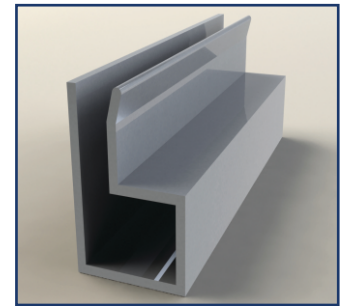
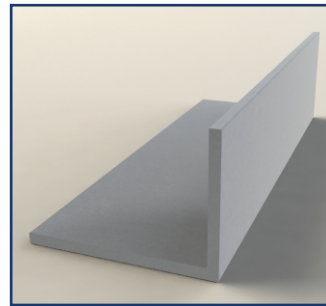
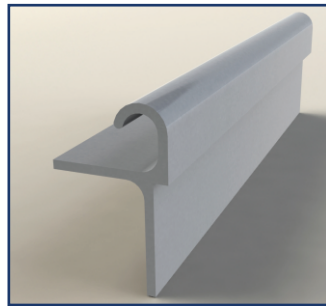
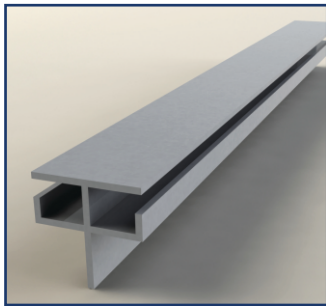
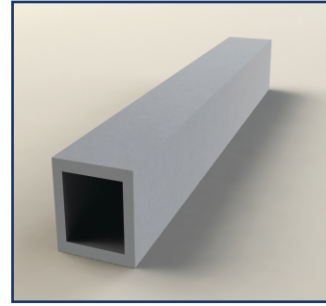
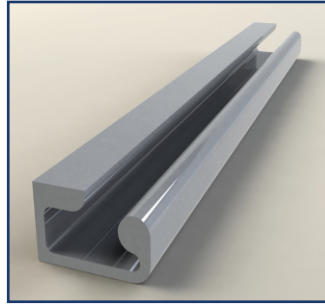
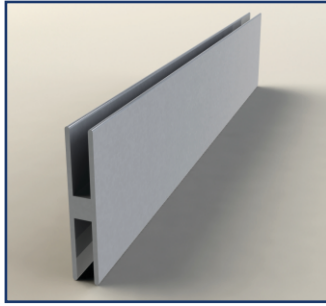
We do not accept return material that was ordered in good faith and was not reported as defective, or damaged in transit, as mentioned in the "Warranty" or "Freight Claim" sections. No exceptions. If a return is granted, the returned material must be in new and salable condition for any credits to be issued. Return freight charges are the responsibility of the customer. A restocking fee of 20% will apply.

## **Artwork**

Custom orders may require full size patterns. All artwork should be submitted in either EPS, PDF, or AI format for regular artwork, and Autocad® DWG for scale engineered drawings.

## **Payment**

Most major credit cards are accepted. Checks are permissible with prior approval. Returned Check Policy is \$50.00 fee per occurrence.



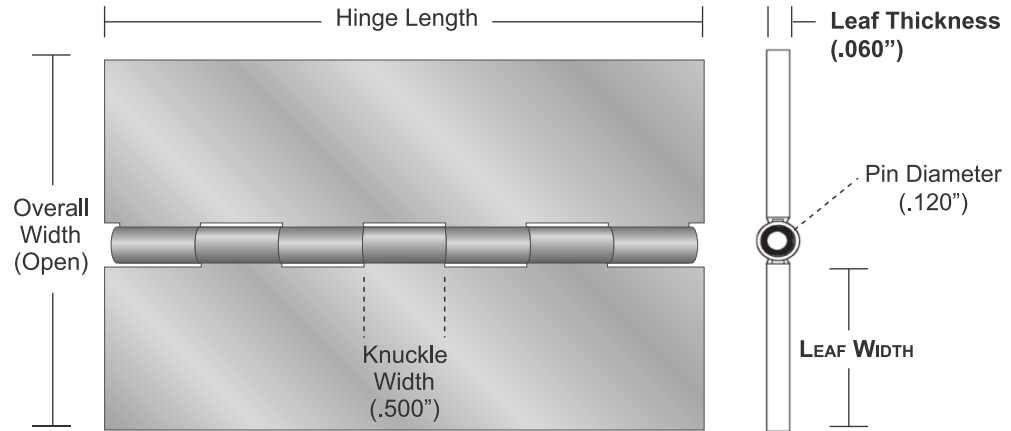
# ALUMINUM COMPONENTS





# Aluminum Lengths - Important Pricing Information

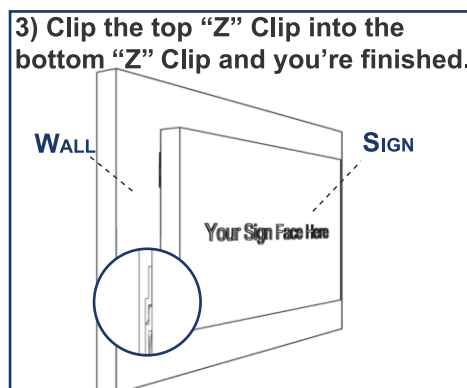
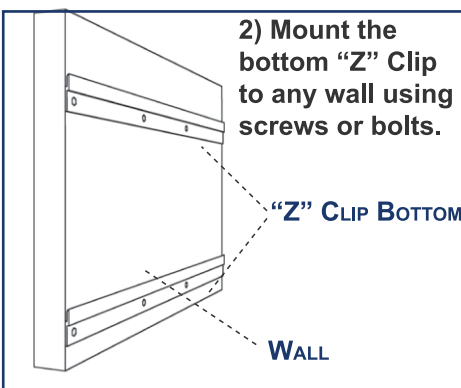
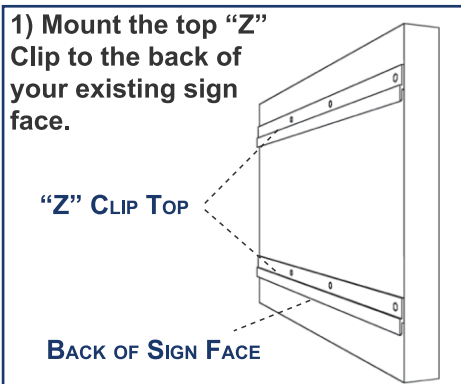
## Piano Hinges



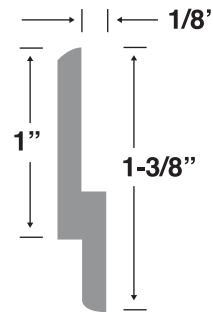
PART #	HINGE SIZE
PH2A72	2" (Open) x 72" (Hinge Length) - Aluminum
PH2A96	2" (Open) x 96" (Hinge Length) - Aluminum
PH3A72	3" (Open) x 72" (Hinge Length) - Aluminum

PART #	HINGE SIZE
PH3A96	3" (Open) x 96" (Hinge Length) - Aluminum
PH4A72	4" (Open) x 72" (Hinge Length) - Aluminum

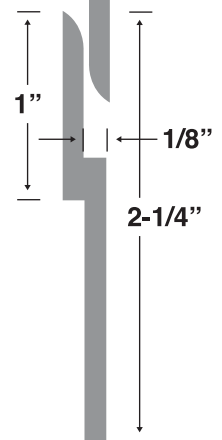
## Z Clips







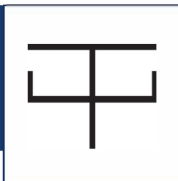





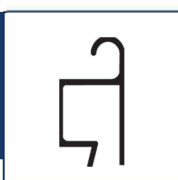


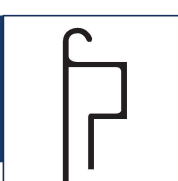
**Medium "Z" Clip**  
part # ZCLIP



**Large "Z" Clip**  
part # ZCLIP



Dividers and Retainers (24.5' Lengths)

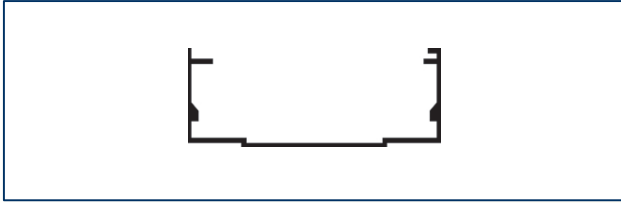
	<b>1-3/8" h Divider</b> <b>LDIVH</b>		<b>1.5" hanging Ret.</b> <b>LHNG1RET</b>
	<b>1-1/2" Divider</b> <b>LDIV1</b>		<b>2.5" hanging Ret.</b> <b>LHNG2RET</b>
	<b>2" Divider</b> <b>LDIV2</b>		<b>1.5" x 1" F Ret.</b> <b>L1FRET</b>
	<b>hinge bracket</b> <b>LHB</b>		<b>1.5" x 1.5" F Ret.</b> <b>L2FRET</b>
	<b>Flat hinge</b> <b>LFLRET</b>		<b>Y Retainer</b> <b>LYRET</b>
	<b>1.5" hinge Ret.</b> <b>LHH1RET</b>		<b>Z Retainer</b> <b>LZRET</b>
	<b>1.5" x 1.5" hinged F</b> <b>LHFRET</b>		<b>2.5" hinge Ret.</b> <b>LHH2RET</b>

\* ITEMS SHOWN ABOVE ARE NOT ACTUAL SIZE

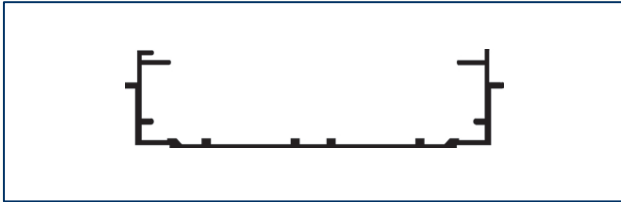


**Slide Style Frames (24' - 6" Lengths)**

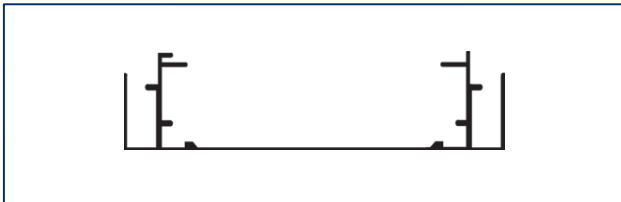
**ALUMINUM LENGTHS**



**4" slide Frame**  
**(Part# - L4F) | 24.5' Lengths**



**6" slide style Frame**  
**(Part# - L6F) | 24.5' Lengths**



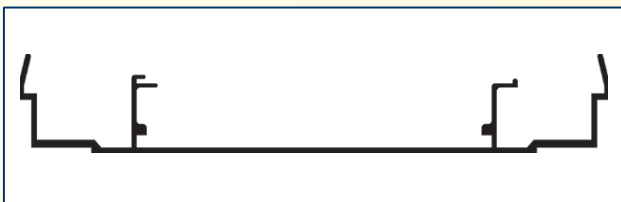
**6" WR slide style Frame**  
**(Part# - L6FWR) | 24.5' Lengths**



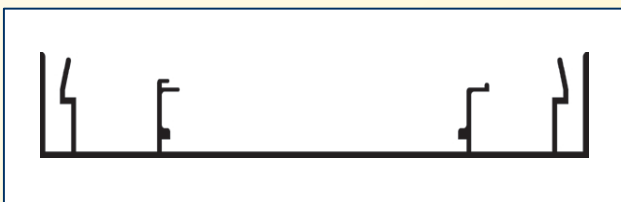
**9" slide style Frame**  
**(Part# - L9F) | 24.5' Lengths**



**9" WR slide style Frame**  
**(Part# - L9FWR) | 24.5' Lengths**



**11.5" slide style Frame**  
**(Part# - L11F) | 24.5' Lengths**



**11.5" WR slide style Frame**  
**(Part# - L11FWR) | 24.5' Lengths**

\* ITEMS SHOWN NOT ACTUAL SIZE

## Hinge Frames

ALUMINUM LENGTHS



**8" hinge style Frame**  
**(Part# - L8F) | 24.5' Lengths**



**10" hinge style Frame**  
**(Part# - L10F) | 24.5' Lengths**



**12" hinge style Frame**  
**(Part# - L12F) | 24.5' Lengths**



\* ITEMS SHOWN NOT ACTUAL SIZE

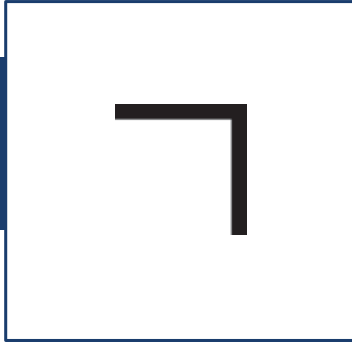


## Retainers , Angles, & Flat Bar

ALUMINUM LENGTHS

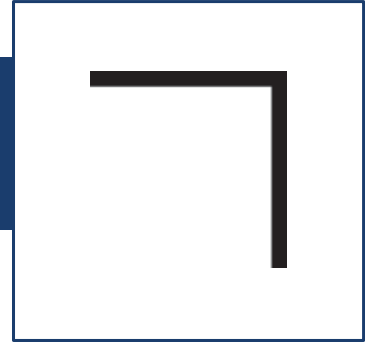
Part # L6RET

1" x 1" x 1/16 Retainer  
For Use with  
4" & 6" Frames  
24.5' Lengths



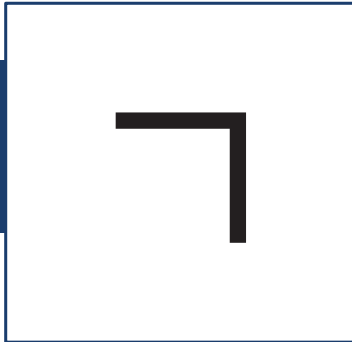
Part # L9RET

1.5" x 1.5" x 1/8 Retainer  
For Use  
with 9" Frames  
24.5' Lengths



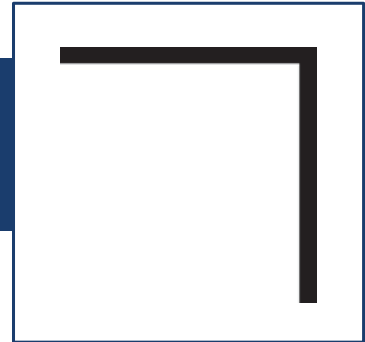
Part # LCA3

1" x 1" x 1/8" Angle  
20' Lengths



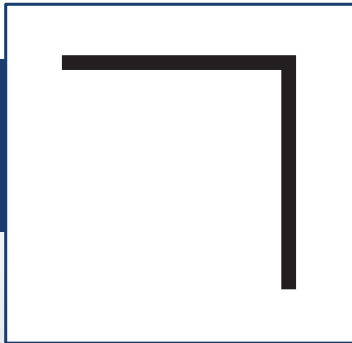
Part # L11RET

1.75" x 1.75" x 1/8" Retainer  
For Use with  
11.5" Frames  
24.5' Lengths



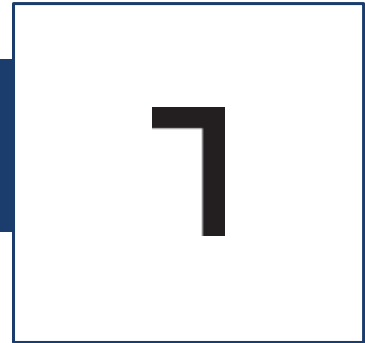
Part # LCA50

2" x 2" x 3/16" Angle  
20' Lengths



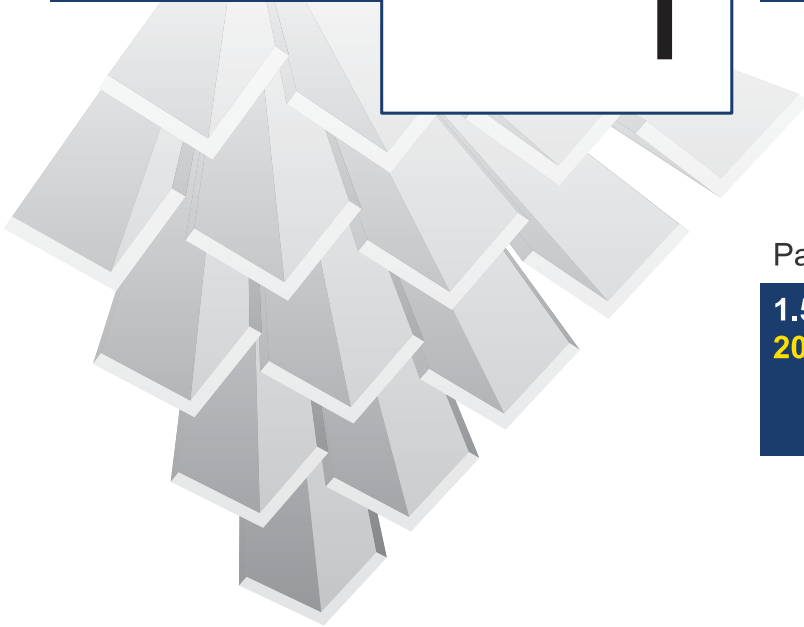
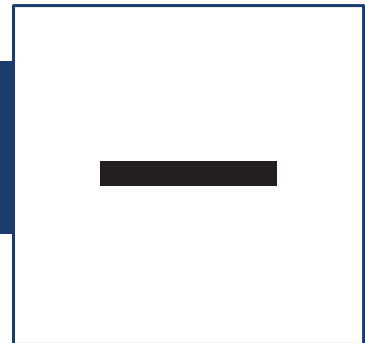
Part # LCA5

3/8" x 3/4"  
x 1/8" Angle  
8' Lengths

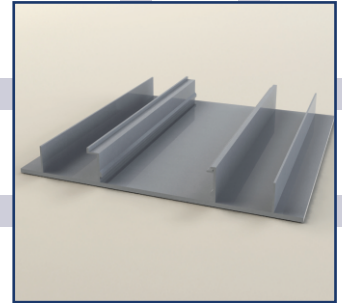
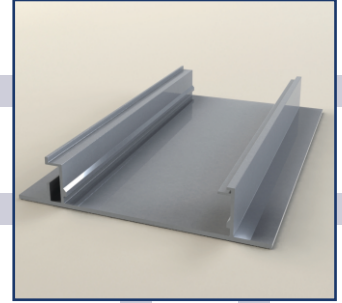
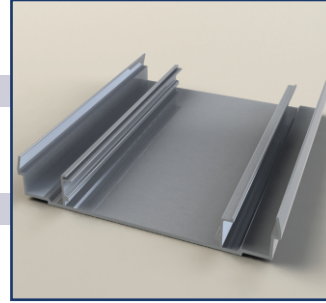
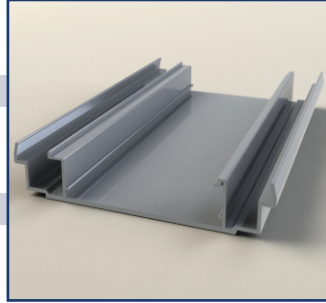
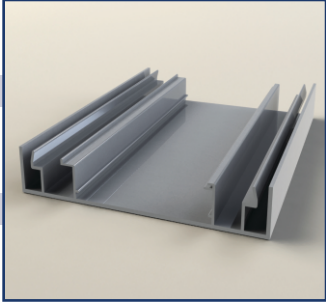
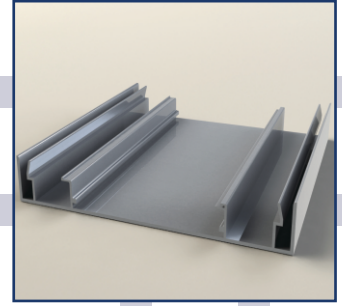
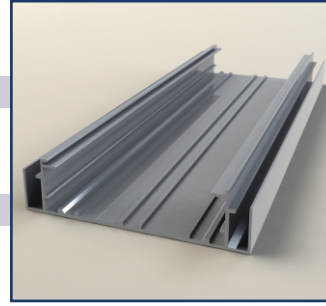
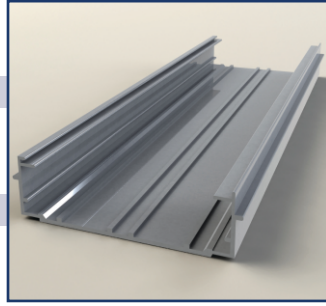
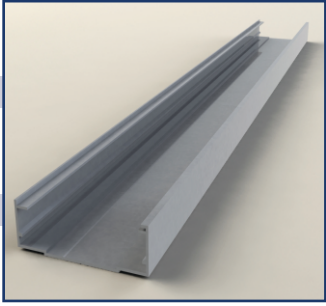


Part # LFB1

1.5" x 3/16" Flat bar  
20' Lengths



\* ITEMS SHOWN NOT ACTUAL SIZE



# SIGN FRAMES



# KIT MATERIALS

- WR Frame on the top and bottom (Retainer is extruded with the frame)
- Regular frame with removable retainer on the sides
- 8 Corner Angles (Allows for Double Corner Angles)
- \*Socket Raceway for lamp dividers available upon request
- Aluminum clad composite backs available with s/f assembled frames
- Wiring for fluorescent lighting available upon request

SIGN FRAMES



## Slide Style Frames Important Pricing Information

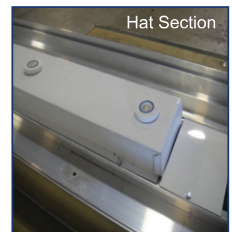
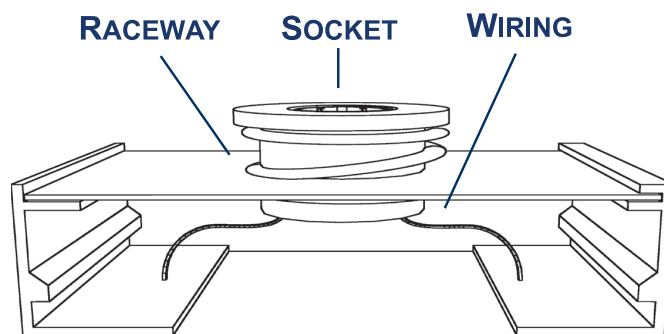
### OPTIONS

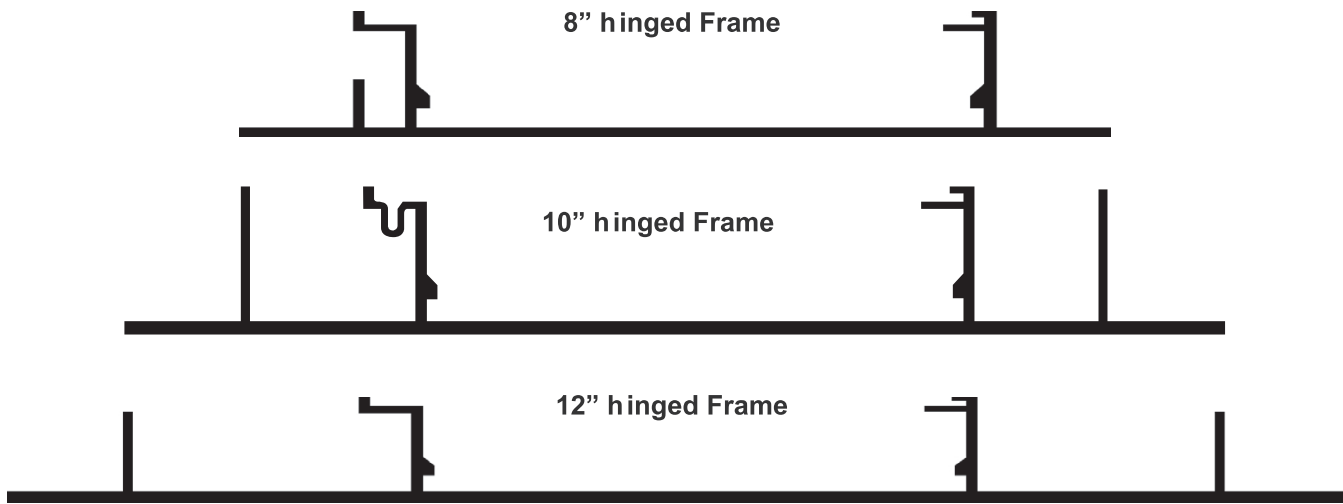
- Single Face and Double Face prices are the same on Slide Style Kits
- All welded and wired prices include LEDs, Power Supplies, and are **UL Certified** with label
- Backs include four wall straps upon request
- All welded and wired prices include LEDs, Power Supplies, and are **UL Certified** with label
- Add a photocell
- Add a UL approved Disconnect Switch
- All Admiral frames are constructed using two sets of 3/16" corner angles
- Add a divider bar to a kit or assembled frame
- Add painting to assembled frames

## Socket Raceway Covers

Admiral socket raceway covers are constructed from white .040" aluminum. Our raceways are priced by the pair, and sockets are included.

Non-socketed & Unpunched raceways available





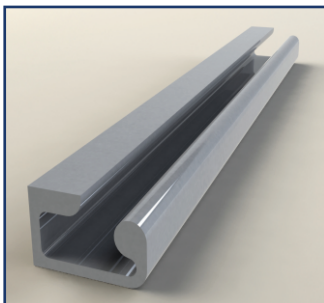
SIGN FRAMES



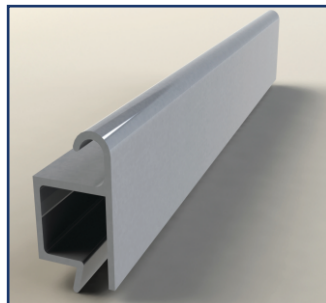
## Hinge Style Frames Important Pricing Information

### OPTIONS

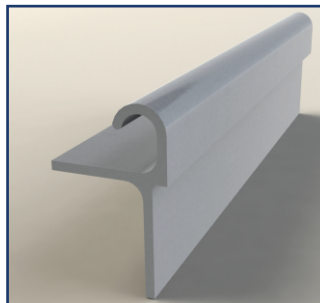
- 2-1/2" HINGED AND HANGING retainers available upon request
- All frames are priced using Hidden Hinges and 1-1/2" retainers
- All welded and wired prices include LED and power supplies, and are **UL Certified** with label.
- Add a photocell
- Add a UL approved Disconnect Switch
- Add Painting
- Aluminum clad composite backs
- Backs include 4 wall straps upon request



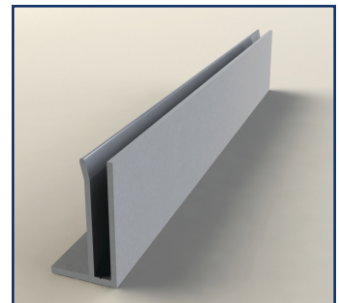
Hinge Bracket



1-1/2" Hinge Retainer



Flat Hinge Retainer



1-1/2" x 1" F Retainer

All welded and wired frame backs must be installed by Admiral to meet UL specifications.





**EMBOSSED  
ROUTED  
SMOOTH PAN FORMED  
PUSH THRU  
READERBOARD**



# SIGN FACES



# FACES

.177 Polycarbonate  
.150 DR - Modified Acrylic  
Both available in White or Clear

FLAT,  
SMOOTH PAN FORMED,  
or EMBOSSED

EFI DIGITAL GRAPHICS are printed directly on the face... first or second surface.

Faces are formed *AFTER* graphics are applied!

Pan faces are available up to 8' x 16' in one piece.  
Larger faces will have seams.

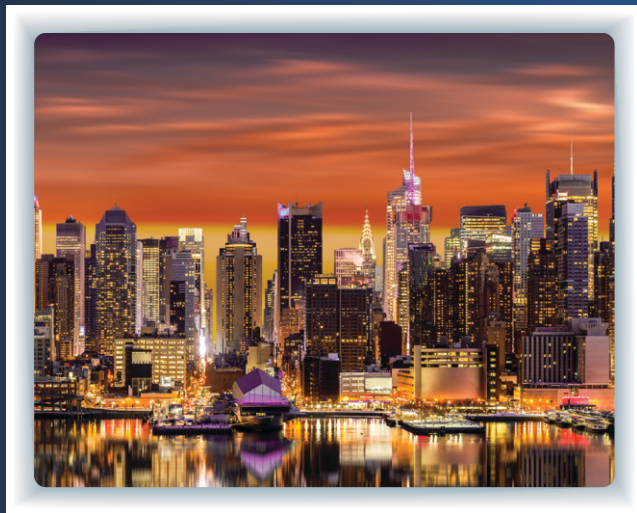


SIGN FACES



# Digitally Printed Pan Faces

- Second Surface, UV Protector
- Custom Prints and Designs? No Problem!
- True Color Match
- Images can be taken all the way to the edge with no distortion or discoloring.



**BEFORE**



**THERMOFORM  
TECHNOLOGY**

(888) 251-9865  
WWW.ADMIRAL-WHOLESALE.COM  
SALES@ADMIRAL-WHOLESALE.COM

**ADMIRAL**  
WHOLESALE SIGN COMPONENTS

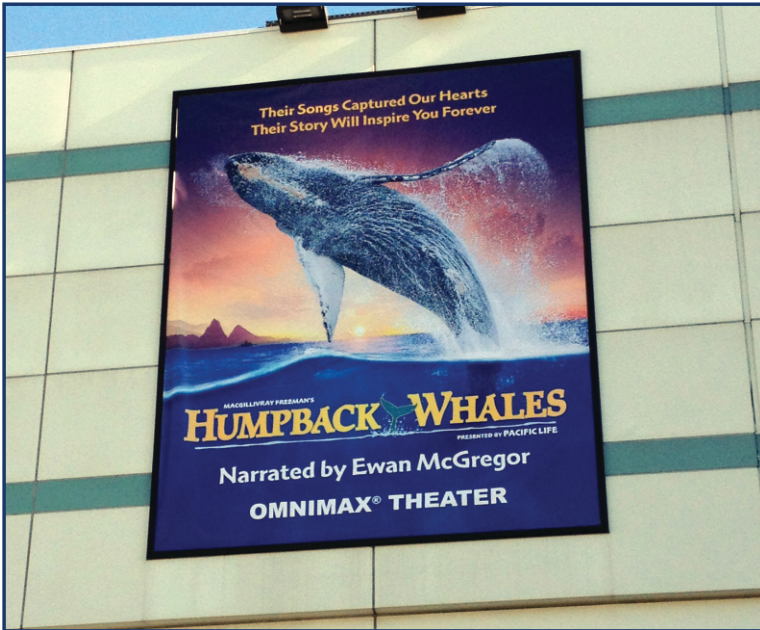




Under Canopy Signs



Security Cover Signs



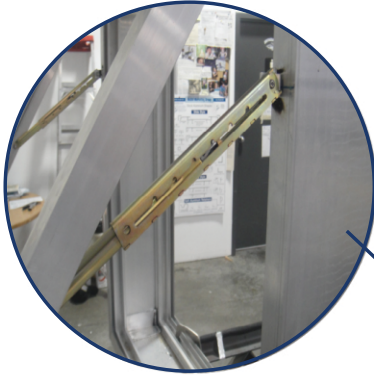
ClipsIN Vinyl Banner Frames

# SIGN SYSTEMS

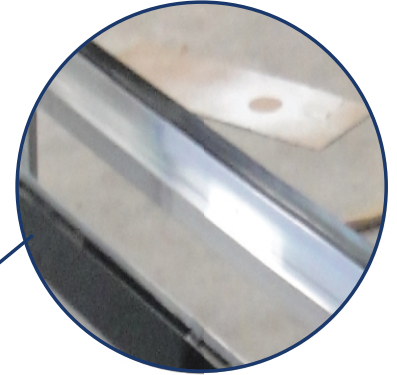


# PROTECT YOUR MESSAGE! SECURE SYSTEMS FOR CHANGEABLE COPY

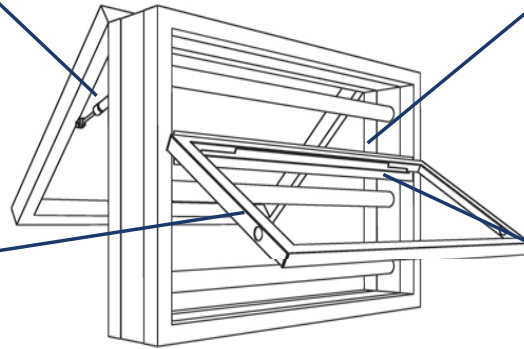
Click-N-Locks



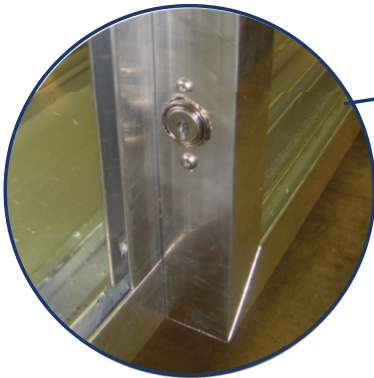
2.5" Divider



## Double Sided Security Cover System



Optional Locks



Hinging Door



Kit contains cut and mitered frame and retainers, with corner angles, and cover guides. Partial security cover kits include one horizontal divider bar per side. Available in single sided or double sided.

Our method of fabricating allows the main copy of a church, school or business sign to read clearly on a top panel of the flat face, pan face, or embossed pan face.

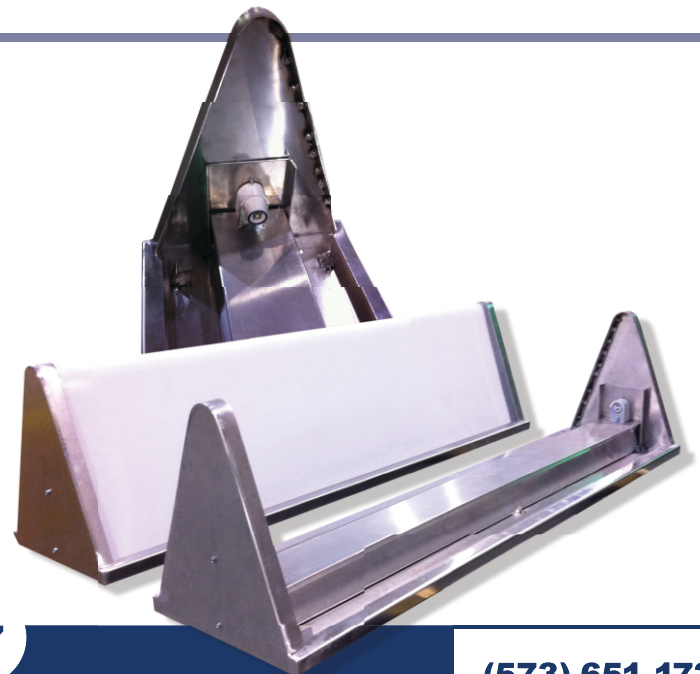
The cover attaches to the divider bar by hidden hinge retainer and can be secured using screws, hasp, or cabinet lock.

## UNDER CANOPY SIGN SYSTEM

Our under-canopies come in:

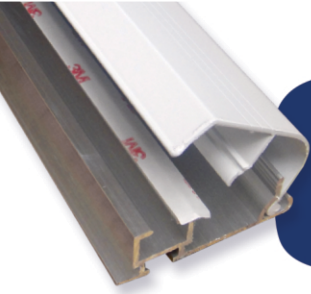
- 36"
- 48"
- 60"
- 72"

Wired for fluorescent or LED illumination



SIGN SYSTEMS





# ClipsIN BANNER RETAINING SYSTEM

The affordable retainer system to transform banners into professional and permanent signs.

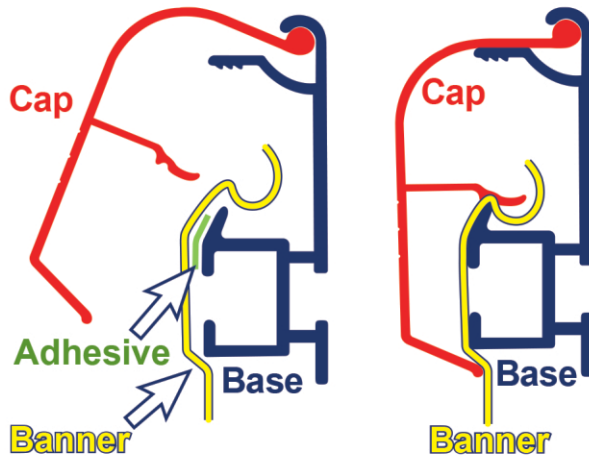


*from this...*

*...to this!*

*in a few easy steps.*

## How it Works:



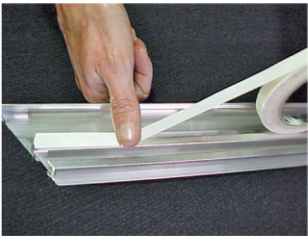
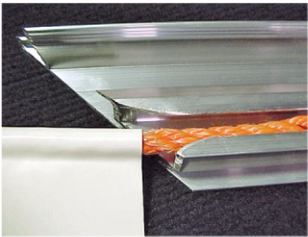
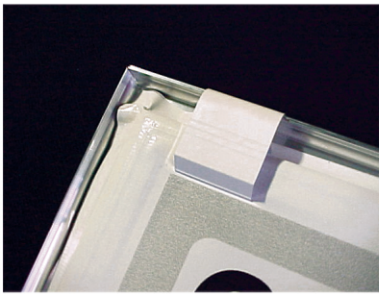
**Choose Your Finish**



**Handy Cap Release Tool Available...Sold Separately**







# Clips in BANNER RETAINING SYSTEM

This revolutionary Clipsin system transforms loose and floppy banners into sturdy, permanent looking signs.

Our exclusive clamping and tensioning design ensures your banner face remains flat and wrinkle free.

*It's simple to install & great for any permanent or temporary application.*

- **OUTDOOR/INDOOR USE**
- **POST & PANEL MOUNTABLE**
- **WALL MOUNTABLE**
- **VANDAL RESISTANT**
- **ORDINANCE FRIENDLY**

(contact your local municipality)

**No Hem or Sewing Needed!**

Clipsin accepts plain cut edge right off the roll!

**Not just a banner frame... its a sign face clamping and tension system in one!**

**888-251-9865**

**www.admiral-wholesale.com**

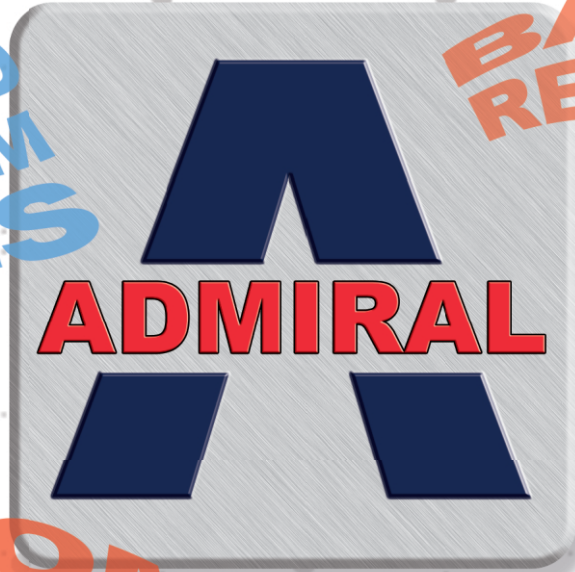
**sales@admiral-wholesale.com**





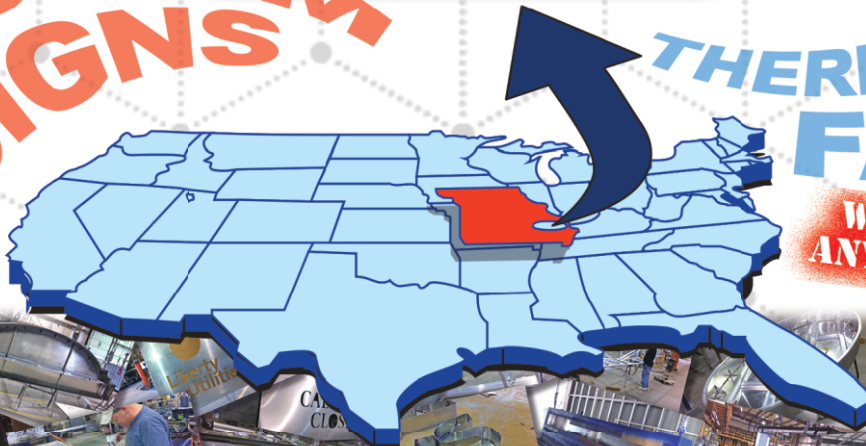
**EXTRUDED  
ALUMINUM  
FRAMES**

**BANNER  
RETAINERS**

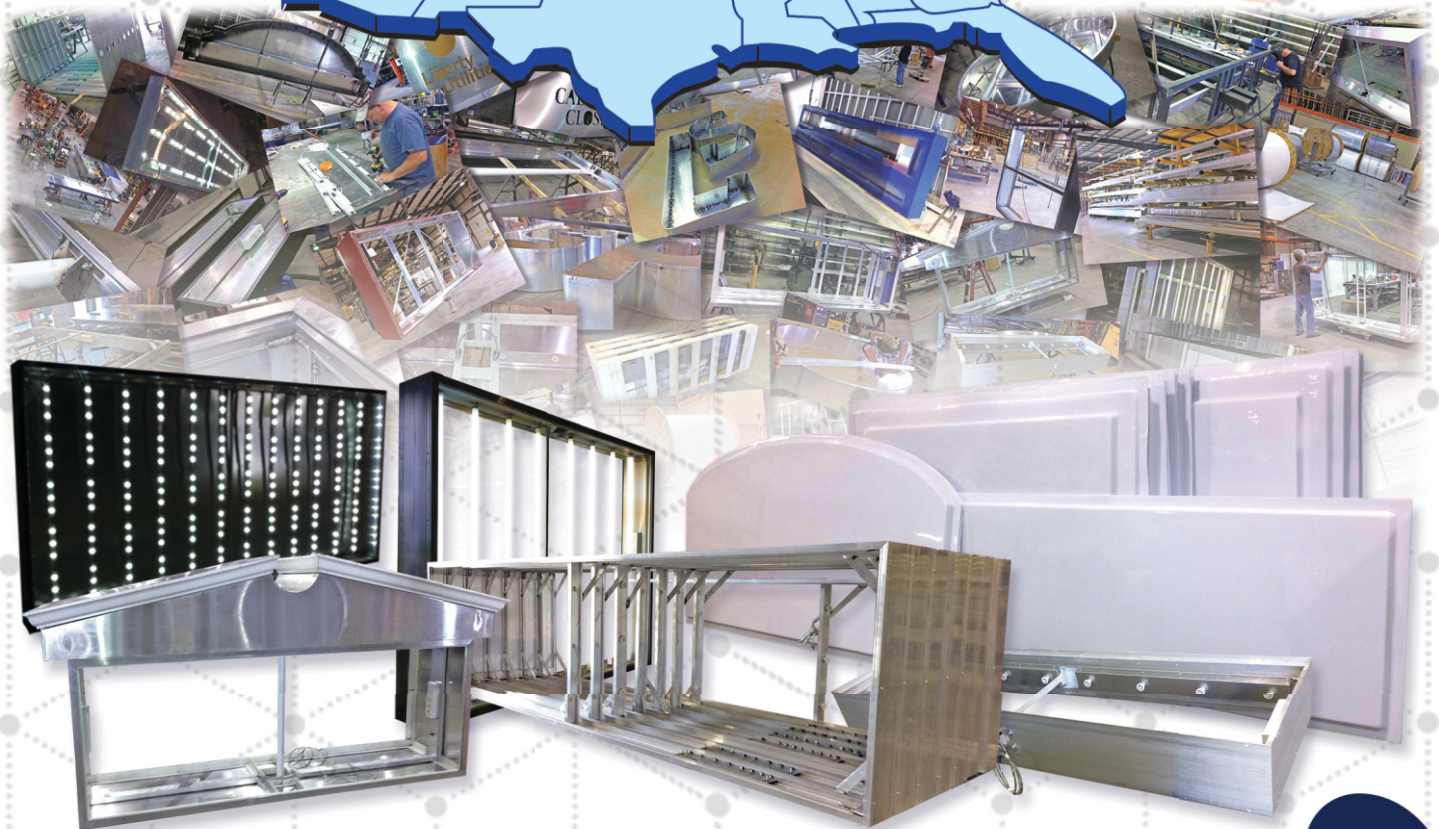


**CUSTOM  
SIGNS**

**THERMOFORMED  
FACES**



**WE SHIP  
ANYWHERE**



INTERNATIONAL SIGN ASSOCIATION



MID SOUTH SIGN ASSOCIATION INC.

**888-251-9865**

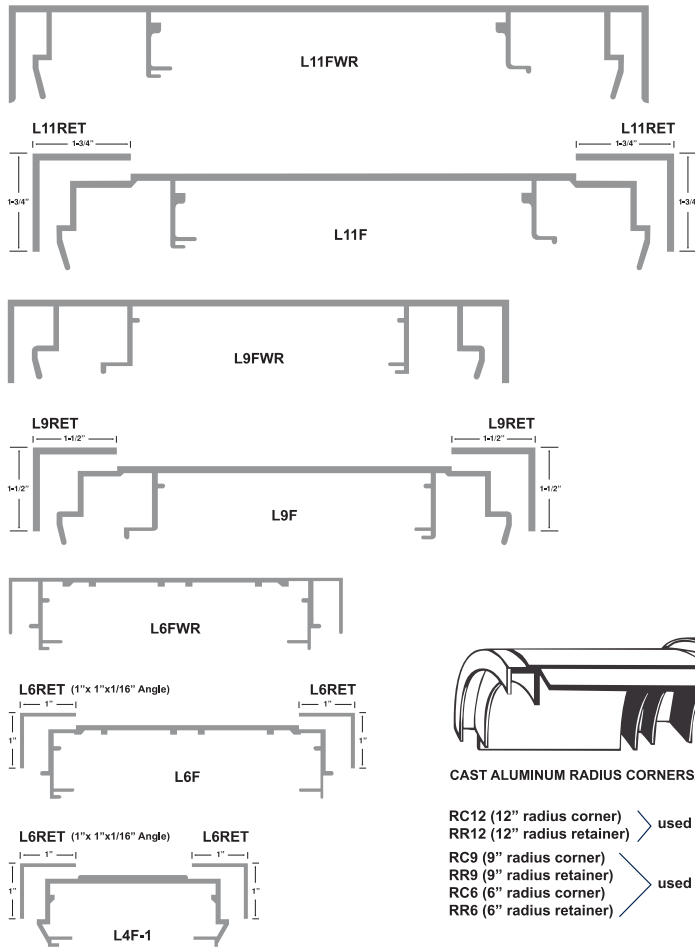
[www.admiral-wholesale.com](http://www.admiral-wholesale.com) • [sales@admiral-wholesale.com](mailto:sales@admiral-wholesale.com)





Stock Frame Components

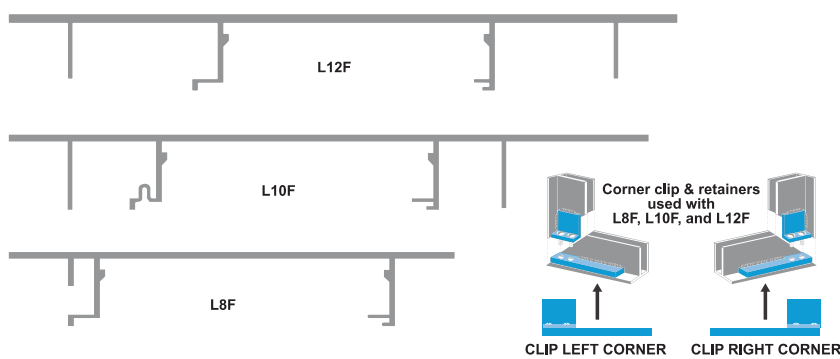
Slide Style



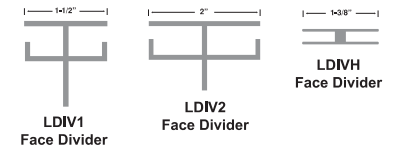
CAST ALUMINUM RADIUS CORNERS/RETAINERS

- RC12 (12" radius corner) > used on L11F(WR) Frame
- RR12 (12" radius retainer)
- RC9 (9" radius corner) > used on L9F(WR) Frame
- RR9 (9" radius retainer)
- RC6 (6" radius corner)
- RR6 (6" radius retainer)

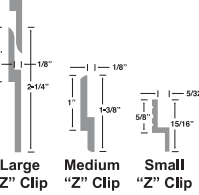
Hinged Style



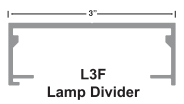
Dividers



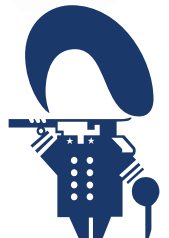
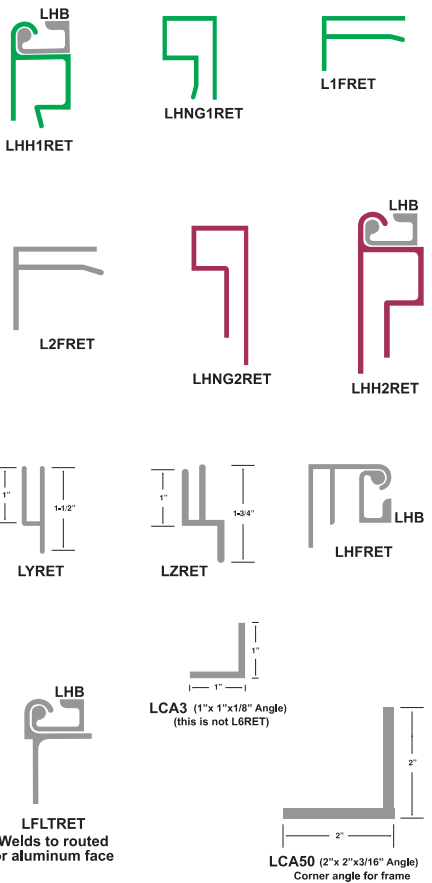
Z Clip



Lamp Divider



Retainers





---

**www.admiral-wholesale.com**  
**P.O. Box 500**  
**Cape Girardeau, MO 63702**

**573-651-1727**

**888-251-9865**

**Fax: 573-334-9578**

**www.admiral-wholesale.com**  
**sales@admiral-wholesale.com**